

## SIMPLE SYMPHONY

I  
BOISTEROUS BOURRÉE

Allegro ritmico

BENJAMIN BRITTEN

Violin I part of the first movement, 'Boisterous Bourrée', from 'Simple Symphony' by Benjamin Britten. The tempo is 'Allegro ritmico'. The key signature is one sharp (F#), and the time signature is 2/4. The score includes various dynamics, articulations, and performance instructions.

Measures 1-12:

- Measure 1: *f* (forte), *Vln. II* (Violin II), *f* (forte), *mf* (mezzo-forte).
- Measure 2: *f* (forte), *mf* (mezzo-forte).
- Measure 3: *f* (forte), *mf* (mezzo-forte), *f* (forte), *Vla.* (Viola), *f* (forte).
- Measure 4: *f* (forte).
- Measure 5: *f* (forte), *Vln. II* (Violin II), *f* (forte).
- Measure 6: *p* (piano), *dolciss.* (dolcissimo), *Vln. II* (Violin II), *p* (piano), *più f* (più forte).
- Measure 7: *p* (piano), *mp* (mezzo-piano), *espress.* (espressivo).
- Measure 8: *mf* (mezzo-forte).
- Measure 9: *mf* (mezzo-forte), *più f* (più forte).
- Measure 10: *f* (forte), *dim.* (diminuendo), *Vla.* (Viola), *pp* (pianissimo), *Vlc. (pizz.)* (Violoncello, pizzicato).

# VIOLIN I

4

*pp* *mf* *pizz.*

*p* *pp* *arco* *V*

*pizz.* (+) *mf* *p* *mf* *p* *mf* 5

Vln. II

*arco* *ppp* *pp* *marcato*

*ppp* Vln. II *pp* *cresc.*

6

*p sempre* *f subito*

7

*f* *marc.*

*f* *cresc.* *ff* *Allargando*

8 *Animato*

*f*

*ff* *sf*

*dim. molto* *(mf) sempre dim.* *(p)* Vlc.

9 Tempo I

Violin II

Measures 9-12 of the Violin II part. Measure 9 begins with a piano (*p*) dynamic. Measure 10 features a crescendo hairpin. Measure 11 includes a *Vln. II* label above the staff. Measure 12 ends with a piano (*p*) dynamic. The bottom staff shows the lower register of the violin, with dynamics *pp* and *ppp* indicated.

## II PLAYFUL PIZZICATO

### **Presto possibile- Pizzicato sempre**

**Presto possibile - Pizzicato sempre**

Violin II (Vln. II) and Viola (Vla.) parts, measures 1-4. The score is in 6/8 time and B-flat major. Measure 1: Vln. II starts with a *pp* (pianissimo) dynamic, playing a quarter note G4, a quarter note A4, and a quarter note Bb4. The Viola part is a whole note chord of G4, A4, and Bb4. Measure 2: Vln. II continues with a quarter note C5, a quarter note Bb4, and a quarter note A4. The Viola part is a whole note chord of G4, A4, and Bb4. Measure 3: Vln. II plays a quarter note G4, a quarter note A4, and a quarter note Bb4. The Viola part is a whole note chord of G4, A4, and Bb4. Measure 4: Vln. II plays a quarter note C5, a quarter note Bb4, and a quarter note A4. The Viola part is a whole note chord of G4, A4, and Bb4. Dynamics include *pp*, *pizz.* (pizzicato), *mf* (mezzo-forte), *cresc.* (crescendo), *p marc.* (piano marcato), *p* (piano), *f* (forte), and *poco a poco dim.* (poco a poco diminuendo).

VIOLIN I

5

Vlc. Vla. *p cresc.* *f*

*f*

6

*f* *cresc.* *p*

7

*cresc.* *f cresc.*

*ff* *marc.* *sf* G.P.

TRIO  
Molto pesante

Vla. *f* *f marc.*

8

*p marc.* *pp* Vla. *p* *f* (non troppo f)

*f* (come sopra) *f* *pp*

9

*p* *ff*

10

*ff* *sf* Vln. II *ff* *sf* *lunga* *pp marc.* *pp* Vlc. 8va bassa

Tempo I

Vln. II *pp*

11

Vln. II

*mf*

*cresc.*

12

*p marc.*

Vln. II

13

*p*

Vln. II

*p*

*f*

*poco a poco dim.*

14

*pp*

Vla.

Vlc.

Vla.

*p cresc.*

15

*f*

16

*f*

*f*

*cresc.*

*p*

*cresc.*

17

*f cresc.*

*ff*

*marc.*

CODA

*sf*

Vla.

*ff*

*ff*

18

Vln. II

*ff*

*ff*

*ff*

*lunga sempre a tempo*

*pp marc.*

*(pp)*

*ffz*

*sf*

*sf*

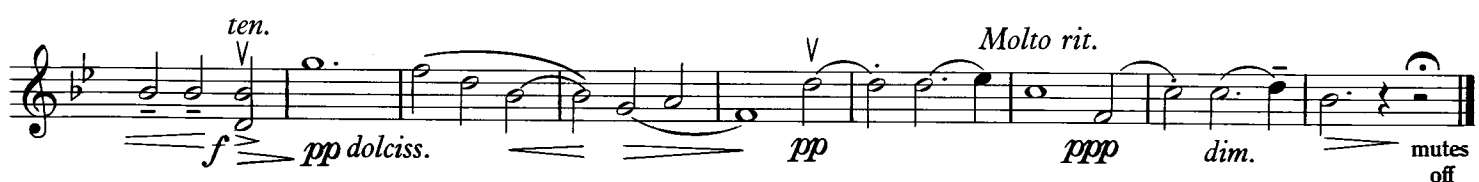
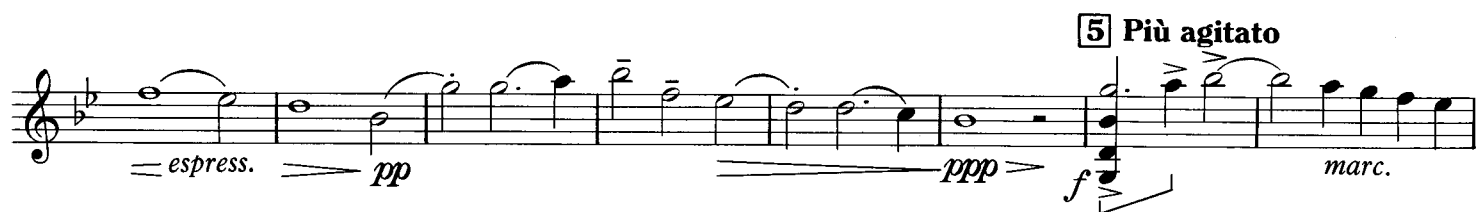
# III SENTIMENTAL SARABAND

**Poco lento e pesante**

*f* *(f)* *dim.* *mf* *p* *dim.* *pp* *p* *molto cresc.* *f* *cresc.* *ff* *dim.* *p* *dim. molto* *1* *2* *3* *4* *5* *(pp)* *6* *7* *8* *(ppp)* *9* *Vln. II* *Vla. Vlc.*

**Poco più tranquillo**

*pp* *simile* *p* *pp* *mp espress.* *4*



# IV FROLICSOME FINALE

**Prestissimo con fuoco**

**1** *sempre* *pp* *p* *pizz.* *arco* *1* *mf* *sempre cresc.* *f* *Vln. II* *Vla.* *Vlc.  $\text{f}$*

**2** *p* *cresc.* *pp* *dim.* *pp* *Vln. II* *mf* *pp*

**3** *pp* *mp cantabile* *cresc.* *f* *Vln. II* *Vla.* *Vlc.* *C.B.*

**4** *ff marcatis.* *pp* *sempre pp* *1* *2* *3* *4* *5* *6* *7* *8*

**5** *pp* *mp cantabile* *cresc.* *f* *Vln. II* *Vla.* *Vlc.* *C.B.*

**6** *pp* *mp cantabile* *cresc.* *f* *Vln. II* *Vla.* *Vlc.* *C.B.*

**7** *pp* *mp cantabile* *cresc.* *f* *Vln. II* *Vla.* *Vlc.* *C.B.*



VIOLIN I

Musical score for Violin I, featuring measures 8 through 13. The score includes various dynamics (dim., mf, p, f, ff, cresc., decresc., pp, sf, sempre f, marcato, p, f cresc.), articulations (arco, pizz.), and performance instructions (Stringendo, Allargando, Più presto). The key signature changes from one flat to one sharp.

**Measure 8:** *arco*, *dim.*, *mf*, *p*, *mf*.

**Measure 9:** *mf*, *p*, *f*, *mf*, *mf*.

**Measure 10:** *pp*, *p*, *mf*, *cresc.*, *ff*, *cresc.*, *ff*, *dim. molto*.

**Measure 11:** *f*, *ff*, *sf*, *Vln. II*.

**Measure 12:** *f*, *Stringendo*, *sf*, *sempre f*, *ff*, *sf*, *sf*, *Allargando*.

**Measure 13:** *1*, *pizz.*, *G.P.*, *ffz*, *G.P.*, *Vlc.*, *Vla.*, *pp*, *p*, *f cresc.*, *ff*, *ff*, *sf*, *ff*, *sf*.